



Short Term Disability Insurance

pays you a weekly benefit if you have a covered disability that keeps you from working.

All Employees not eligible in another group

How does it work?

If a covered illness or injury keeps you from working, Short Term Disability Insurance replaces part of your income while you recover. As long as you remain disabled, you can receive payments for up to 11 weeks.

You're generally considered disabled if you're unable to do important parts of your job — and your income suffers as a result.

Why is this coverage so valuable?

You can use the money however you choose. It can help you pay for your rent or mortgage, groceries, out-of-pocket medical expenses and more.

What's covered?

This insurance may cover a variety of conditions and injuries. Here are Unum's top reasons for short term disability claims:¹

- Normal pregnancy
- Injuries, excluding back
- Joint disorders
- Cancer
- Digestive disorders

Consider your weekly expenses



Food \$_____



Transportation
(gas, car payments, repairs) _____



Child care/elder care _____



Mortgage/rent _____



Utilities
(electric, water, cable, phone) _____

Medical costs
(co-pays, medications) _____

Insurance
(health, life, car, home) _____

Total weekly expenses \$_____

¹ Unum internal data, 2018. **Note:** Causes are listed in ranked order.

Short Term Disability Insurance

How much coverage can I get?

You*	You are eligible for coverage if you are an active employee in the United States working a minimum of 30 hours per week. Coverage amounts Cover 60% of your weekly income, up to a maximum benefit of \$1,000 per week. *See the Legal Disclosures on the back for more information.
-------------	--

The weekly benefit may be reduced or offset by other sources of income. The IRS may require you to pay taxes on certain benefit payments. See your tax advisor for details.

- ! If you didn't get coverage when you were first eligible, you'll have to answer medical questions now. If you're newly eligible, you are guaranteed coverage now with no medical questions. If you already have coverage, you can increase it up to the maximum available with no medical questions. New coverage may be subject to pre-existing condition limitations.

Elimination period (EP)

This is the number of days that must pass between your first day of a covered disability and the day you can begin to receive your disability benefits.

Your benefits would begin after you become disabled for 14 days.

Benefit duration (BD)

The maximum number of weeks you can receive benefits while you're disabled. You have a 11 week benefit duration.

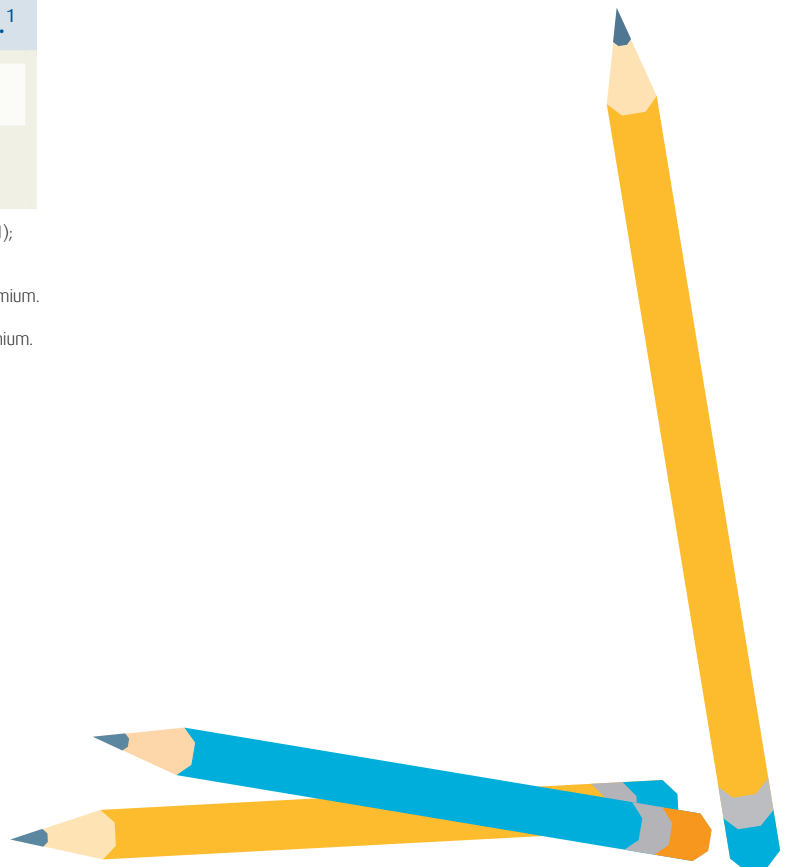
Calculate your benefit

Disability worksheet			
Calculate your weekly disability benefit.			
\$ _____ ÷ 52 = \$ _____	x 60% =	\$ _____	
Your annual earnings	Your weekly earnings (Max % of income covered)	Max weekly benefit available (if the amount exceeds the plan max of \$1,000, enter \$1,000).	

Unum has been a leading provider in group disability benefits for over 4 decades.¹

- | | |
|---|--|
| #1 Individual Disability ²
Whole/Universal Life ³ | #3 Voluntary Benefits ⁵
Critical Illness ⁶ |
| #2 Group Disability ⁴ | |

1 Employee Benefit Plan Review, "Group Accident & Health Surveys 1976-1990" (1977-1991); Gen Re, "U.S. Group Disability Market Surveys 1991-2013" (1992-2014); LIMRA, "U.S. Group Disability Insurance 2014-2016 Annual Sales and In Force" (2015-2017).
2 LIMRA, "4Q 2017 U.S. Workplace Disability Insurance Inforce" (2018), based on inforce premium.
3 Eastbridge, "U.S. Worksite/Voluntary Sales Report: Carrier Results for 2016" (2017).
4 LIMRA, "4Q 2017 U.S. Workplace Disability Insurance Inforce (2018), based on inforce premium.
5,6 Eastbridge, "U.S. Worksite/Voluntary Sales Report: Carrier Results for 2016" (2017).



Short Term Disability Insurance

Exclusions and limitations

Active employee

You are considered in active employment, if on the day you apply for coverage, you are being paid regularly by Fresh Group Holdings LLC for the required minimum hours each week and you are performing the material and substantial duties of your regular occupation.

Delayed effective date of coverage

Insurance coverage will be delayed if you are not an active employee because of an injury, sickness, temporary layoff, or leave of absence on the date that insurance would otherwise become effective.

Definition of disability

You are considered disabled when Unum determines that, due to sickness or injury:

- You are limited from performing the material and substantial duties of your regular occupation; and
- You have a 20% or more loss in weekly earnings.

You must be under the regular care of a physician in order to be considered disabled.

The loss of a professional or occupational license or certification does not, in itself, constitute disability.

“Substantial and material acts” means the important tasks, functions and operations generally required by employers from those engaged in your usual occupation that cannot be reasonably omitted or modified. Unless the policy specifies otherwise, as part of the disability claims evaluation process, Unum will evaluate your occupation based on how it is normally performed in the national economy, not how work is performed for a specific employer, at a specific location or in a specific region.

Deductible sources of income

Your disability benefit may be reduced by deductible sources of income and any earnings you have while you are disabled, including such items as group disability benefits or other amounts you receive or are entitled to receive:

- Workers’ compensation or similar occupational benefit laws
- State compulsory benefit laws
- Automobile liability insurance policy
- Motor vehicle insurance policy or plan
- No fault motor vehicle plan
- Legal judgments and settlements
- Salary continuation or sick leave plans, if applicable
- Other group or association disability programs or insurance
- Social Security or similar governmental programs

Exclusions and limitations

Benefits will not be paid for disabilities caused by, contributed to by, or resulting from:

- War, declared or undeclared or any act of war
- Active participation in a riot
- Intentionally self-inflicted injuries;
- Loss of professional license, occupational license or certification;
- Commission of a crime for which you have been convicted;
- Any period of disability during which you are incarcerated;
- Any occupational injury or sickness (this will not apply to a partner or sole proprietor who cannot be covered by law under workers’ compensation or any similar law);

The loss of a professional or occupational license does not, in itself, constitute disability.

Termination of coverage

Your coverage under the policy ends on the earliest of the following:

- The date the policy or plan is cancelled
- The date you no longer are in an eligible group
- The date your eligible group is no longer covered
- The last day of the period for which you made any required contributions
- The last day you are in active employment except as provided under the covered layoff or leave of absence provision.

Unum will provide coverage for a payable claim that occurs while you are covered under the policy or plan.

This information is not intended to be a complete description of the insurance coverage available. The policy or its provisions may vary or be unavailable in some states. The policy has exclusions and limitations which may affect any benefits payable. For complete details of coverage and availability, please refer to Policy Form C.FP-1 et al., or contact your Unum representative.

Underwritten by:

Unum Life Insurance Company of America, Portland, Maine

© 2019 Unum Group. All rights reserved. Unum is a registered trademark and marketing brand of Unum Group and its insuring subsidiaries.